

Fly the clearance!



**NAT CONTINGENCY**

IF YOU CAN'T COMPLY WITH ATC CLEARANCE DUE TO

- EMERGENCY MEDICAL DIVERT
- ENGINE FAILURE
- DEPRESSURIZATION
- ICING
- TURBULENCE

1. TRY TO GET REVISED ATC CLEARANCE

2. IF NO ATC CLEARANCE TURN AT LEAST 30°

- Maintain FL / Minimise descent
- ACAS and visual watch
- Lights on
- Talk 121.5, 123.45, 7700, SATCOM

3. ESTABLISH 5 NM OFFSET TRACK
4. DESCENT TO BELOW FL 290
5. FLY AT 500 FT VERTICAL OFFSET FROM NORMAL LEVELS
6. PROCEED UNTIL NEW ATC CLEARANCE RECEIVED

EEP etops entry point  
 EEP NXXXX.XMYYYYYY.Y  
 ETP1, 2, 3...  
 XXXYYY NXXXX.XMYYYYYY.Y  
 EXP etops exit point  
 FXP NXXXX.XMYYYYYY.Y

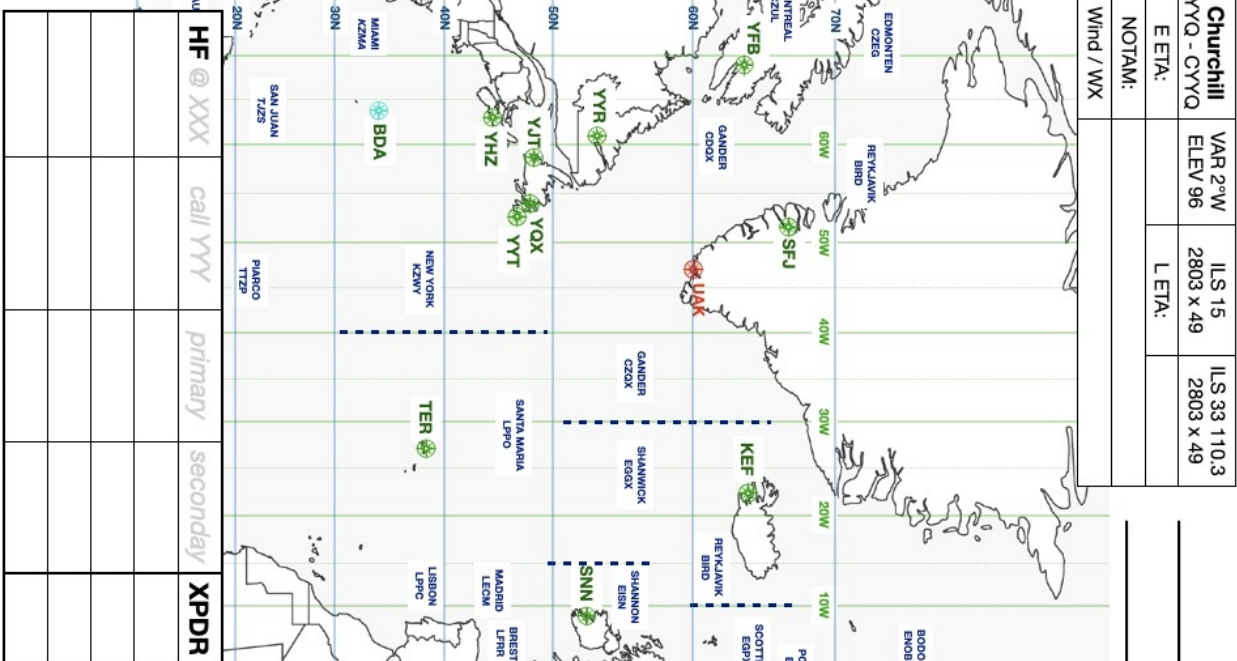
**DIVERSION DECISION MAKING**

1. Loss of NAT HLA capability **BEFORE** entering NAT HLA area
2. WX minima at diversion airport(s) going below company/crew en-route minima **BEFORE** reaching ETOPPS Entry Point (or diversion airport(s) becoming unsuitable for any reason)
3. Failure cases → **LAND ASAP**
4. Increased FUEL consumption → **exceeding available FUEL reserves**
5. **ELEC generation**

1. only **ONE GEN** remaining following a multiple failure
2. only **ONE MAIN GEN** remaining and LOW LEVEL, LOW PRESSURE or GREEN HYD overheat

<b>Yellowknife</b> YZF - CYZF	VAR 16°E ELEV 675	RNAV 16 2287 x 46	ILS 34 109.5 2287 x 46
E ETA:		L ETA:	
NOTAM:			
Wind / WX			
<b>Iqaluit</b> YFB - CYFB	VAR 27°W ELEV 110	RNAV 16 2623 x 61	ILS 34 109.9 2623 x 61
E ETA:		L ETA:	
NOTAM:			
Wind / WX			
<b>Goose Bay</b> YYR - CYYR	VAR 21°W ELEV 160	ILS 26 110.3 3368 x 61	RNAV 15/33 2020 x 61
E ETA:		L ETA:	
NOTAM:			
Wind / WX			
<b>Gander</b> YOX - CYOX	VAR 20°W ELEV 496	ILS 21 109.5 3109 x 61	RNAV 13/31 2713 x 61
E ETA:		L ETA:	
NOTAM:			
Wind / WX			
<b>St. Johns</b> YJT - CYJT	VAR 20°W ELEV 496	RNAV 09 3051 x 61	ILS 27 109.5 3051 x 61
E ETA:		L ETA:	
NOTAM:			
Wind / WX			
<b>Bermuda</b> BDA - TXKF	VAR 15°W ELEV 18	VOR 12 113.9 2782 x 46	ILS 30 109.9 2958 x 46
E ETA:		L ETA:	
NOTAM:			
Wind / WX			

WATRS → ROUTE / FL / MN



<b>Churchill</b> YYQ - CYYQ	VAR 2°W ELEV 96	ILS 15 2803 x 49	ILS 33 110.3 2803 x 49
E ETA:		L ETA:	
NOTAM:			
Wind / WX			
<b>HF @ XXX</b>	call YYY	primary	secondary
<b>XPDR</b>			

<b>Kangerlussuaq</b> SFJ - BGSF	VAR 30°W ELEV 165	LOC 09 109.55 2810 x 60	NDB 09 109.55 382 2810 x 60
E ETA:		L ETA:	
NOTAM:			
Wind / WX			
<b>Narsarsuaq</b> UAK-BGBW	VAR 23°W ELEV 112	NDB 06 1830 x 45	RNAV 06/24 1830 x 45
E ETA:		L ETA:	
NOTAM:			
Wind / WX			
<b>Keflavik</b> KEF - BIKF	VAR 14°W ELEV 169	LS 19 111.3 3045 x 60	ILS 28 108.5 3059 x 45
E ETA:		L ETA:	
NOTAM:			
Wind / WX			
<b>Shannon</b> SNN - EINN	VAR 4°W ELEV 46	ILS 06 109.5 3199 x 45	ILS 24 110.95 3059 x 45
E ETA:		L ETA:	
NOTAM:			
Wind / WX			
<b>Lajes</b> TER - LPJA	VAR 10°W ELEV 180	ILS 15 109.9 3310 x 60	ILS 33 111.5 3310 x 60
E ETA:		L ETA:	
NOTAM:			
Wind / WX			

